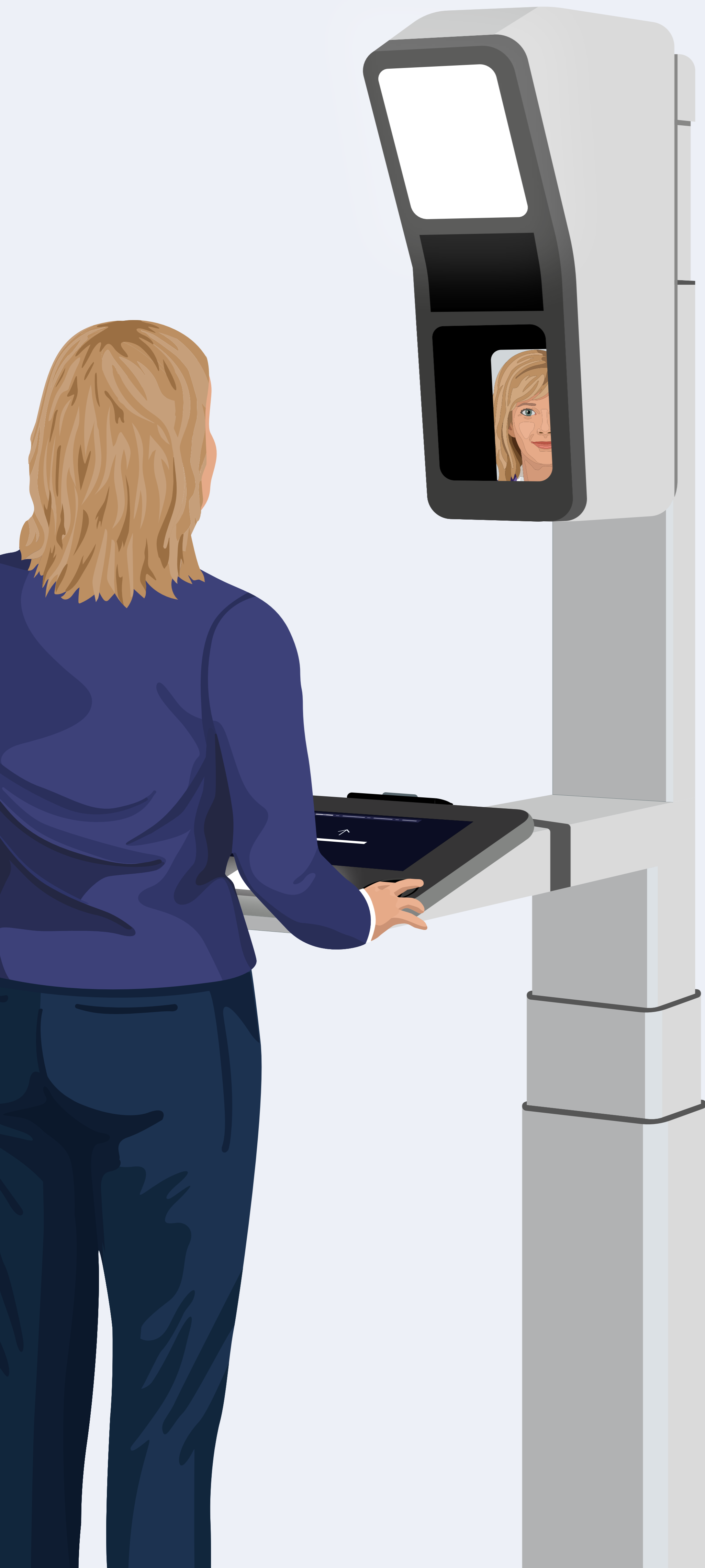


PHOTO IN JUST A FEW STEPS

Recording biometric data with PointID®



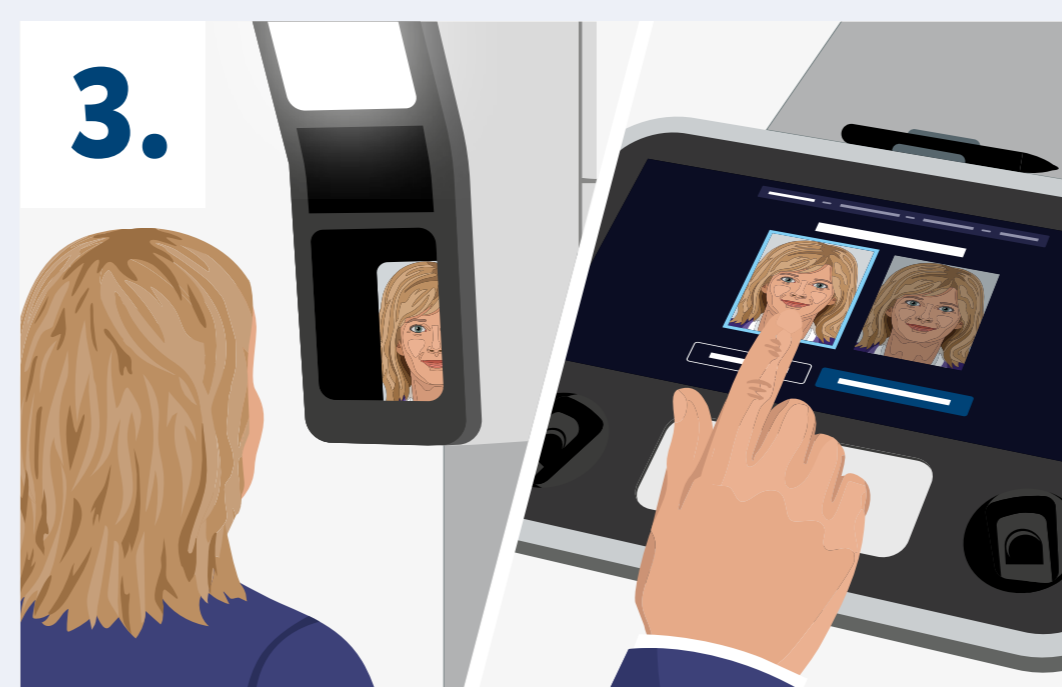
1. Activating PointID® and setting correct height

- Touch the touchpad
- Look directly into the screen
- The device adjusts automatically to your height



2. Selecting document type

- Select the type of document required
- Enter your age range



3. Photographing your face

- Look directly into the screen
- Follow the instructions on the screen
- Select your preferred image on the touchpad



4. Finishing up

- Enter a date so that your data can be identified
- Save the recorded data for later retrieval



5. Applying for document with help from staff

- A member of the office staff will retrieve your data
- You can now apply for your document